



# Texas Cattle Inventory

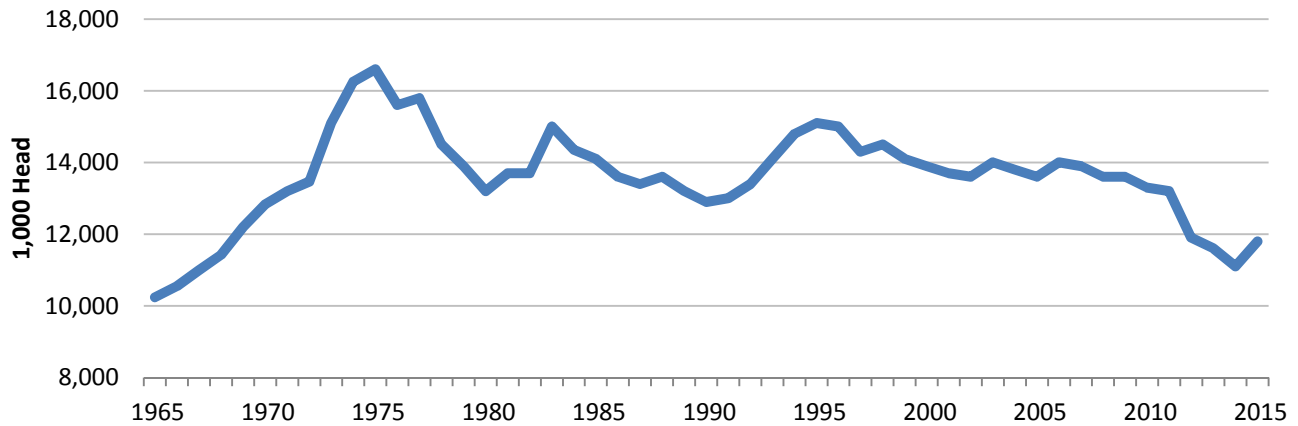
Issue No.: PR-106-14, January 30, 2015

Southern Plains Regional Field Office · Post Office Box 70 · Austin, Texas 78767 · 800-626-3142 · [www.nass.usda.gov/tx](http://www.nass.usda.gov/tx)

Contact: Carol Pittman or Jason Hardegree

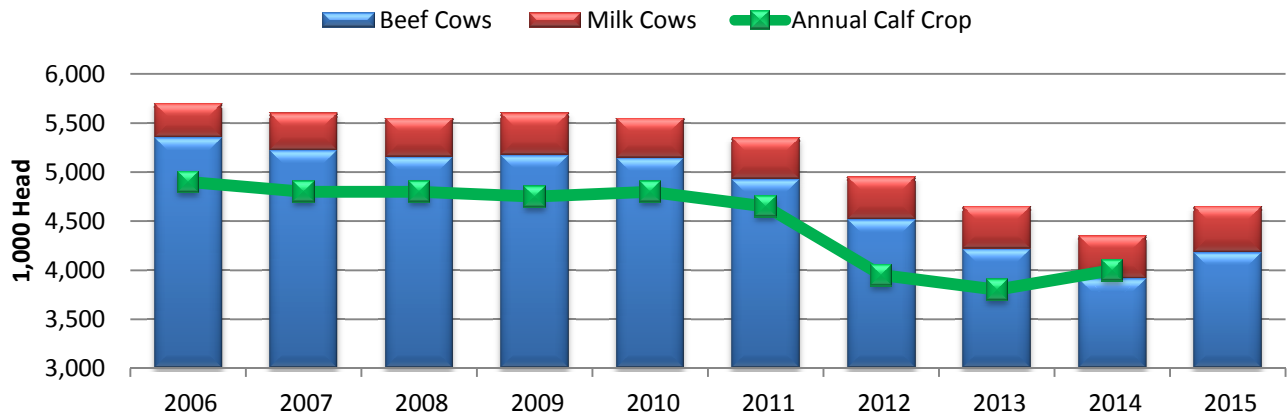
The inventory of Texas cattle and calves totaled 11.8 million head on January 1, 2015, up 6 percent from last year's inventory. Texas continues to rank first in the nation in total number of cattle and calves with 13 percent of the total United States inventory.

## Texas All Cattle Inventory



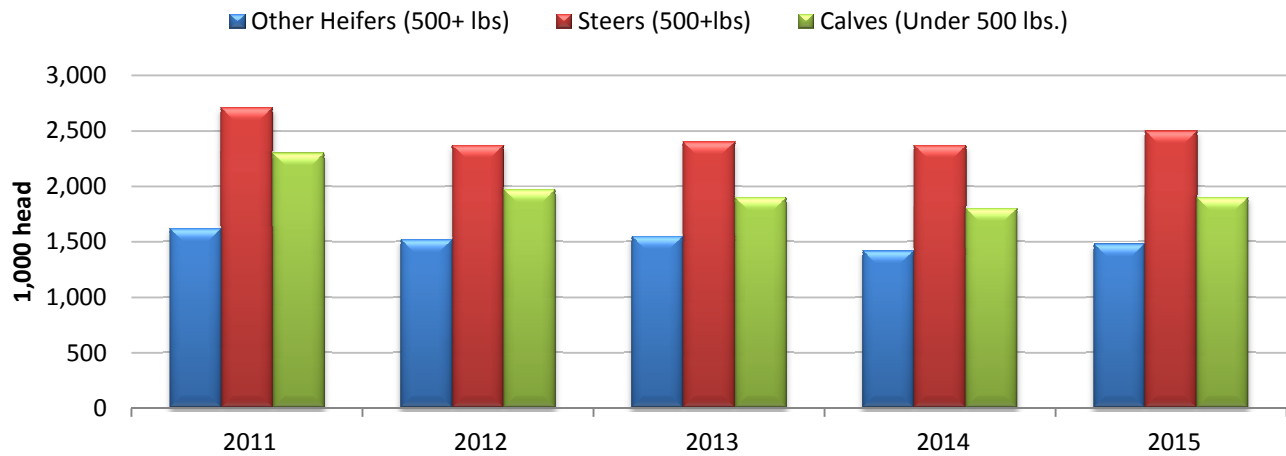
Total inventory of all cows that have calved was 4.65 million head, 7 percent above last year's total. Beef cow inventory, at 4.18 million head, was up 7 percent from 2014. Milk cow inventory, at 470 thousand head, was up 30 thousand head from the 2014 total of 440 thousand head.

## Texas Cow Inventory and Calf Crop



Inventory of all heifers 500 pounds and over in Texas totaled 2.43 million on January 1, 2015, 6 percent above 2014. Beef replacement heifers, at 710 thousand head, is 8 percent higher than 2014. Milk replacement heifers totaled 240 thousand head, up 9 percent from last year.

## Texas Feeder Cattle Supply



Texas inventory of steers 500 pounds and over totaled 2.50 million head on January 1, 2015, up 5 percent from last year. Inventory of calves less than 500 pounds, at 1.90 million head, is 6 percent above last year's total. The 2014 calf crop totaled 4.00 million head, 5 percent higher than the 2013 calf crop.

## Texas January Cattle Inventory and Calf Crop

Item	2013	2014	2015	Percent of Previous Year
	<i>1,000 head</i>	<i>1,000 head</i>	<i>1,000 head</i>	<i>percent</i>
All Cattle and Calves.....	11,600	11,100	11,800	106
Cows & Heifers that have calved .....	4,650	4,350	4,650	107
Beef Cows .....	4,215	3,910	4,180	107
Milk Cows .....	435	440	470	107
Heifers 500 pounds and over.....	2,340	2,300	2,430	106
Beef Replacement .....	590	660	710	108
Milk Replacement .....	200	220	240	109
Other Heifers .....	1,550	1,420	1,480	104
Steers 500 pounds and over.....	2,400	2,370	2,500	105
Bulls 500 pounds and over .....	310	280	320	114
Calves under 500 pounds .....	1,900	1,800	1,900	106
Calf Crop.....	3,800	4,000		105

**U.S. Highlights:** The United States inventory of all cattle and calves totaled 89.8 million head on January 1, 1 percent above last year's inventory of 88.5 million head.

All cows and heifers that have calved totaled 39.0 million head, up 2 percent from the 38.3 million on January 1, 2014. Beef cows totaled 29.7 million head, up 2 percent from a year ago, while milk cows were up 1 percent from a year ago at 9.31 million head. Beef replacement heifers, at 5.78 million head, were up 4 percent from the previous year. Milk replacement heifer numbers were up 1 percent to 4.62 million head. The 2014 calf crop was estimated at 33.9 million head, up 1 percent from 2013.

### United States Cattle Inventory and Calf Crop<sup>1</sup>

Item	2013	2014	2015	Percent of previous year
	<i>1,000 head</i>	<i>1,000 head</i>	<i>1,000 head</i>	<i>percent</i>
All Cattle and Calves .....	90,095	88,526	89,800	101
Cows & Heifers that have calved .....	38,853	38,293	39,000	102
Beef Cows .....	29,631	29,085	29,693	102
Milk Cows .....	9,221	9,208	9,307	101
Heifers 500 pounds and over .....	19,256	18,969	19,240	101
Beef Replacement .....	5,429	5,551	5,777	104
Milk Replacement .....	4,546	4,549	4,615	101
Other Heifers .....	9,281	8,869	8,847	100
Steers 500 pounds and over .....	15,931	15,668	15,779	101
Bulls 500 pounds and over .....	2,074	2,038	2,104	103
Calves under 500 pounds .....	13,983	13,558	13,677	101
Calf Crop .....	33,730	33,900		101

<sup>1</sup> Totals may not add due to rounding

*A random sample of U.S. producers was surveyed to provide data for these estimates. Survey procedures ensured that all cattle producers, regardless of size, had a chance to be included in the survey. Large producers were sampled more heavily than small operations. Data were collected during the first half of January by mail, telephone, and face-to-face personal. Regardless of when operators responded, they were asked to report inventories as of January 1.*

*NASS provides accurate, timely, useful and objective statistics in service to U.S. agriculture. Both national and state specific reports are available via a free e-mail subscription. To set-up this free subscription, visit <http://www.nass.usda.gov> and in the "Follow NASS" box under "Receive reports by Email," click on "National" or "State" to select the reports you would like to receive.*

Link to the US report: <http://usda.mannlib.cornell.edu/MannUsda/viewDocumentInfo.do?documentID=1017>